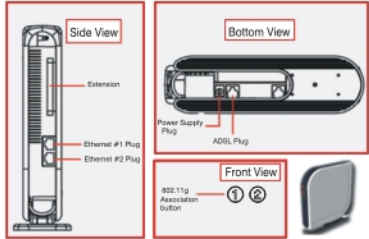
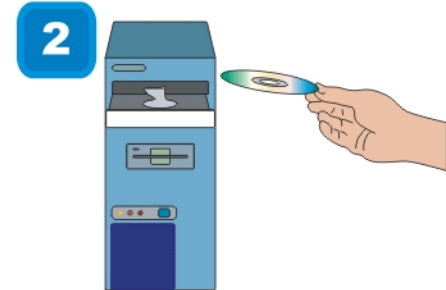


Telkom Cordless Gateway - ADSL Quick Start Guide

Connection Information



1 Do not plug the Telkom Cordless Gateway or any cables in now. Please wait till you are prompted to do so.



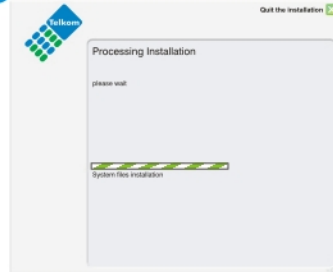
2 Insert the CD-Rom into your computer, then wait for the welcome screen to appear. Follow the instructions on the screen and click **"Continue"**

3



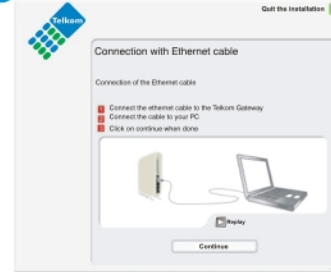
* Plug in the power supply and the telephone cables into your Telkom Cordless Gateway and then click **"Continue"**

4



4 Wait for the driver and shortcuts to be installed for your Telkom Cordless Gateway

5



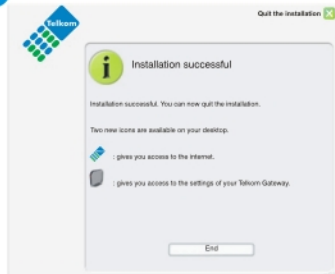
5 Plug the one end of the Ethernet cable into the Telkom Cordless Gateway and connect the other end to your PC and then click on **"Continue"**

6



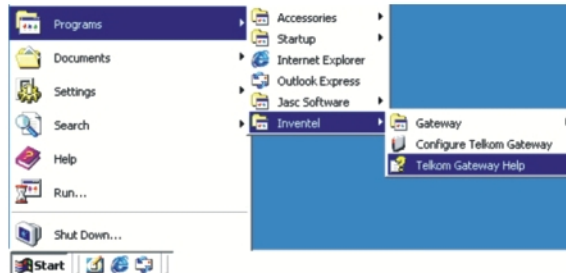
6 Enter your ADSL username and password supplied by your ISP (Internet Service Provider) Then click on **"Continue"**

7



7 The installation has configured your ADSL connection. You can now surf freely on the Internet. Click on **"End"**

Additional Information



For more information please refer to the user manual. In Windows, click on **"Start"**, **"Programs"**, **"Invental"**, **"Telkom Gateway Help"**

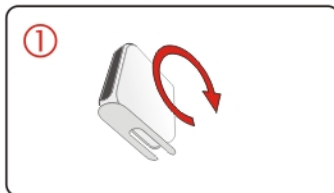


If you want to set the parameters of your Telkom Gateway, please click on your desktop on the icon: **"Configure Telkom Gateway"**

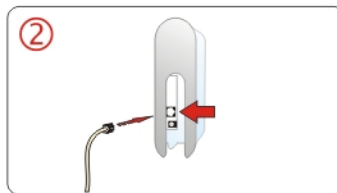


You will then be asked for identification : the default username and password are **"admin"** and **"admin"**. As a security precaution it is advisable to change the password.

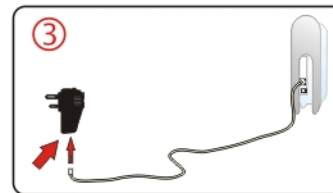
Cable connection procedure for South Africa



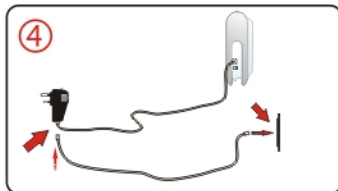
Flip your Telkom gateway onto its back



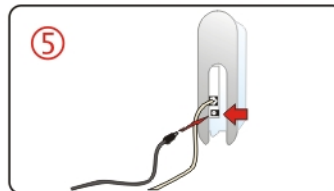
Plug the telephone cable into the socket on the bottom of your Telkom Gateway



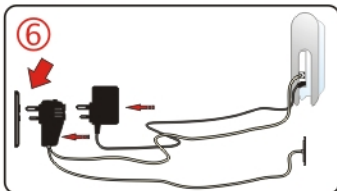
Plug the other end of the telephone cable into either one of the sockets on the Lightning Protection Unit (LPU)



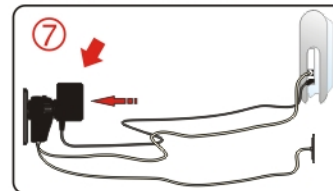
Plug the second telephone cable into the other socket on the LPU, then plug the other end into the telephone wall socket



Plug the power cable into the power socket on the bottom of your Telkom Gateway



Plug the LPU into the wall power outlet



Then plug the power supply into the LPU

Carton contents



1. Installation CD
2. Telephone cables
3. Power supply for Telkom Gateway
4. Lightning protection unit (LPU)
5. Telkom Gateway
6. Ultimate Handset
7. Power supply for Ultimate Handset
8. Ethernet cable

Note: Microfilters are not included, and has to be purchased separately. Microfilters are essential on each socket in front of a phone/fax that shares the same line as the ADSL.

Important Information



Warning, this CD-ROM is only compatible with the following Operating systems:

Windows XP
Windows 2000
Windows ME
Windows 98 second Edition.

Your Internet Service provider Broadband service must be installed in your house

Before proceeding with the installation of your Telkom Gateway, your high-speed Broadband service has to be available on your telephone line. If this is not the case, you will have to wait until your service has been activated. Activation will normally take up to ten days from registration and you will receive notification that your account has gone live. If you are in doubt as to whether your account has been activated, please contact your internet service provider.

Do not proceed with the installation of your Telkom Gateway before you have received a confirmation email or letter from your Internet Service Provider, confirming that your Broadband is available. This letter will give you the username and password for your Broadband connection. Without them, you will be able to configure your Telkom Gateway correctly.

Before proceeding with the installation please ensure :

- That any installed firewall and anti-virus protection software be disabled during installation.
- That any other open applications be closed during installation.

Where to locate my Telkom Gateway :

To ensure a good wireless connection , you should try to position your Telkom Gateway in accordance to these parameters:

1. Choose a place as far away as possible from interference sources such as :
 - large metallic surfaces
 - aquariums
 - microwave ovens
 - 2.4 Ghz wireless telephones
 - wireless TV transmitters

2. Choose a high location, for example; high on a shelf, in a central location of your house so as to cover the area for the wireless devices you intend to connect.

WiFi setup



1. Association Mode Button

- 1 Press the button to put your Telkom Gateway into Association mode, so you will be able to connect a new wireless device.

The "WiFi" LED on the front panel will flash.

Step 1. After pressing the associate button you have 10 minutes to connect a new wireless device to the Gateway.

Step 2. A desktop computer, laptop or Pocket PC must have a WiFi card (802.11b/g) already installed. Follow the instructions on how to connect to a WiFi access point as indicated in the user manual of the installed WiFi card.

Step 3. Set the WiFi card as follows:

- SSID to "INVENTEL-599C". (Not required on cards supporting Automatic SSID)
- Network type to "Infrastructure".
- WEP to "Enabled" (Encryption).
- Length to "128bits".
- Network authentication set to "Shared".

A 26 digit WEP key can be found on a label on the base of the modem.

Note: Be sure your network card is set to obtain IP address and DNS automatically (The built-in DHCP inside the Gateway will assign an IP).