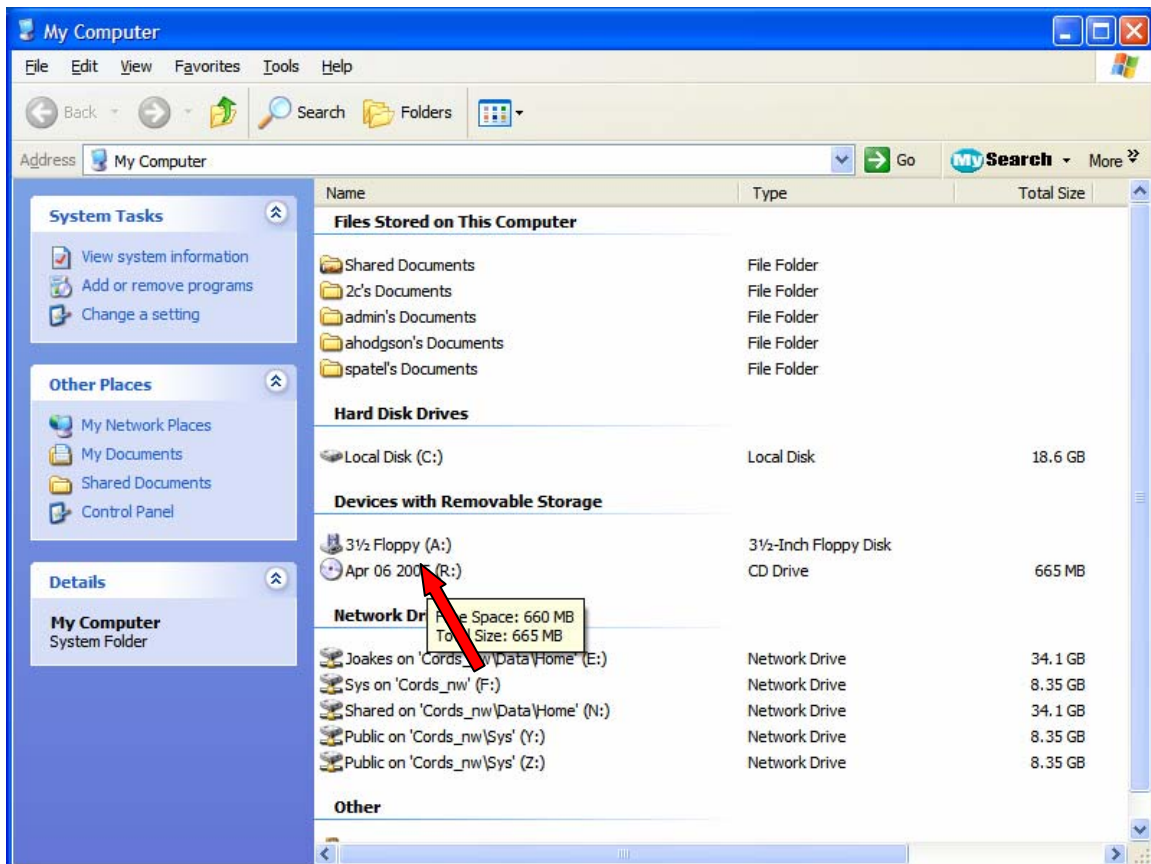


## Installation of SD-Link11b version 3.3.1 software.

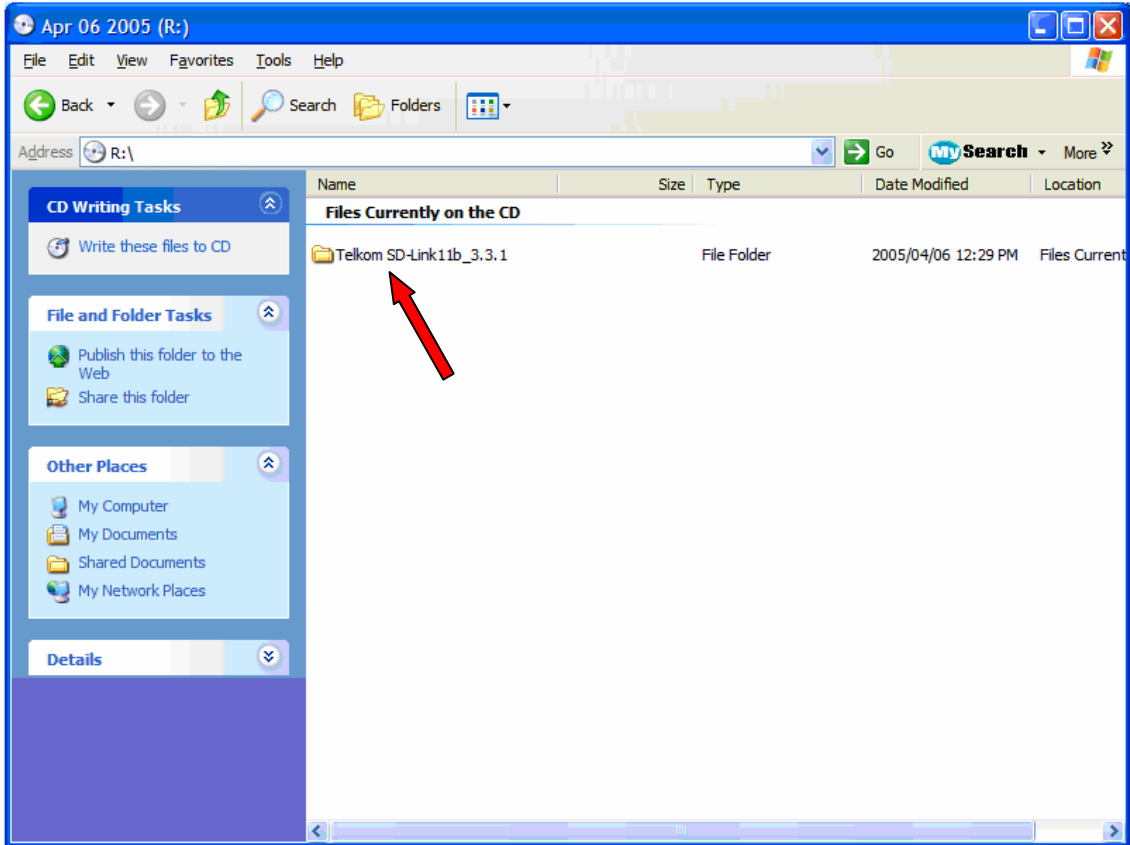
### Before you begin.

ActiveSync must be loaded on your computer (refer to Chapter 4 of your PocketPc manual). Your PocketPc must be in the docking station and communicating with your computer. The explanation below is for Windows XP. Adapt the instructions for your operating system.

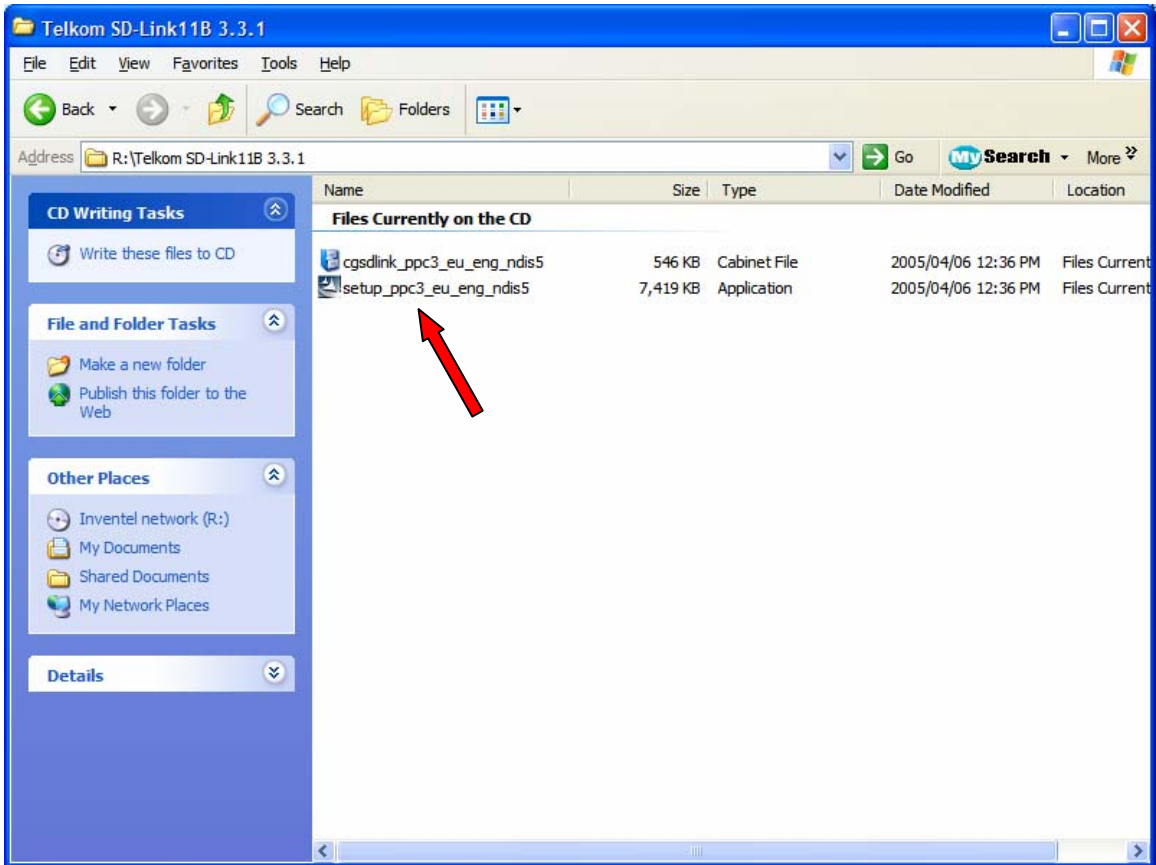
- 1) Insert your Telkom SD-Link11b version 3.3.1 software update CD into your CD Rom drive on your computer.
- 2) Click the Windows "Start" icon and click "My Computer".
- 3) Below is a screen that could be similar to the one displayed on your computer.




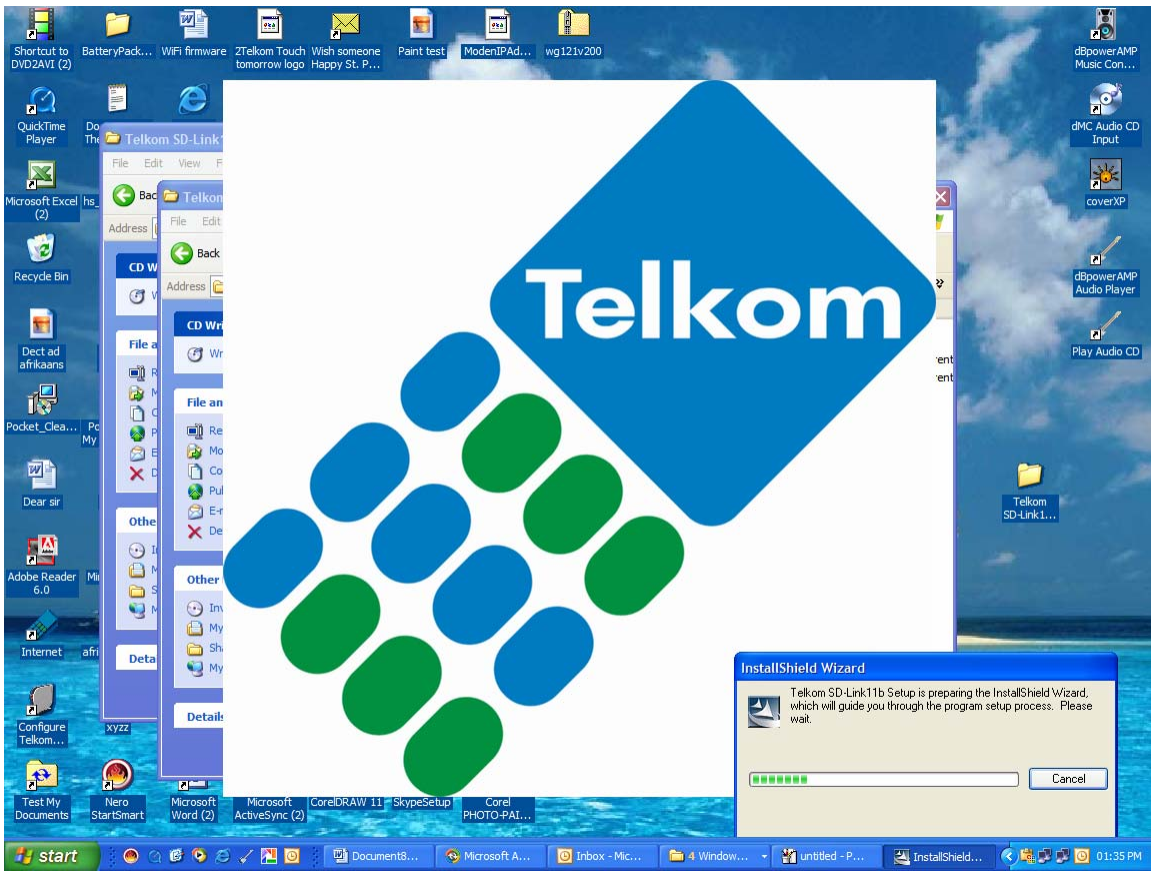
- 4) Double click on your CD Rom Drive icon.



4) Double click "Telkom SD-Link11b\_3.3.1" folder.



5) Double click  setup\_ppc3\_eu\_eng\_ndis5



6) This screen will appear and the software installation will begin. Follow all prompts from your computer as well as your PocketPc.

END